

PEDESTAL SIMULATORS

Control and Diagnostic System

HIGH-QUALITY
&
INNOVATIVE
MANUFACTURING



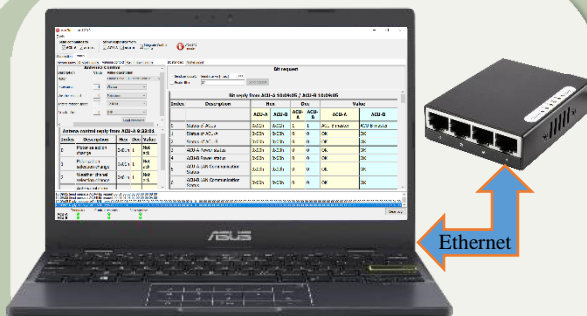
Diagnostics
+ Control



CMS
SW Development



Dual Ethernet



SW CMS SIMULATOR



HW PEDESTAL SIMULATOR

MAIN FEATURES

- Suitable for RAMET antenna pedestal dual-drive with electromagnetically controlled clutches
- Standard FW of ACU (Antenna Control Unit)
- Dual Ethernet communication interface
- Self-diagnostic function of Antenna control unit (ACU)

HW Pedestal Simulator

- Efficient CMS SW development using a HW Pedestal Simulator that replaces real pedestal

SW CMS Simulator

- Remote control + diagnostics of antenna pedestal dual-drive (start/stop, antenna rotation speed selection, PSR antenna polarisation control, weather channel switch control, waveguide air valve control, electric clutch control) using SW CMS Simulator (radar control and monitoring system)

MONITORED PARAMETERS

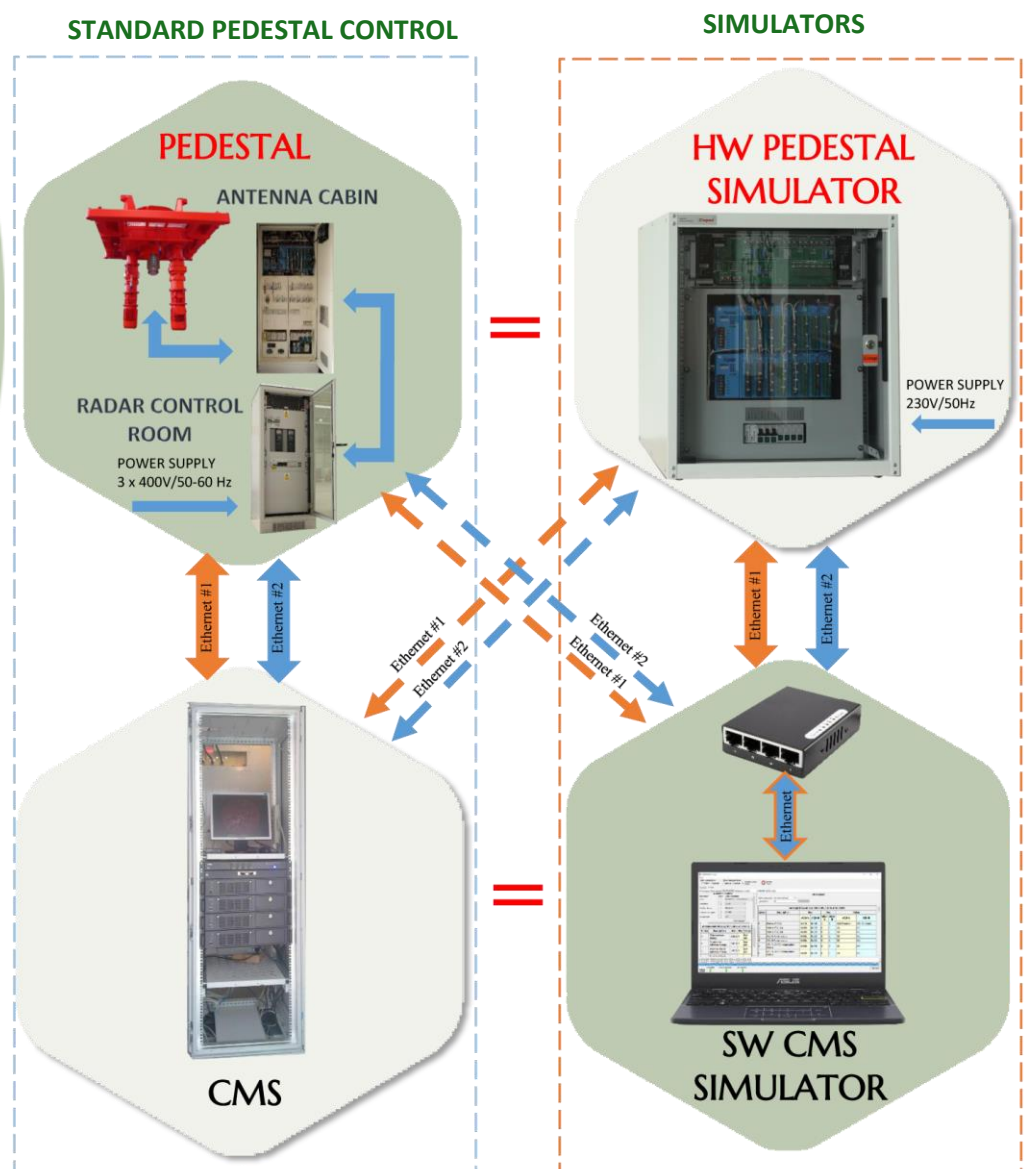
- Antenna rotation speed
- Temperatures of motors, gearboxes, antenna cabin, outdoor
- Oil levels
- Wind speed
- Power supply statuses
- Safety/fire protection
- Non-authorized access protection
- BITE functions

CONTROLLED PARAMETERS

- PSR Antenna polarization, weather switch, air valve control
- Antenna rotation speed setting
- Drive 1, 2 power on control

MAIN AVANTAGES

- Commission of the Pedestal after installation at the station (without complete radar electronics)
- SW CMS development without the need for a real pedestal



RAMET s.r.o.
 Letecká 1110,
 686 04 Kunovice,
 CZECH REPUBLIC



+420 572 415 251



info@ramet.as



www.ramet.as